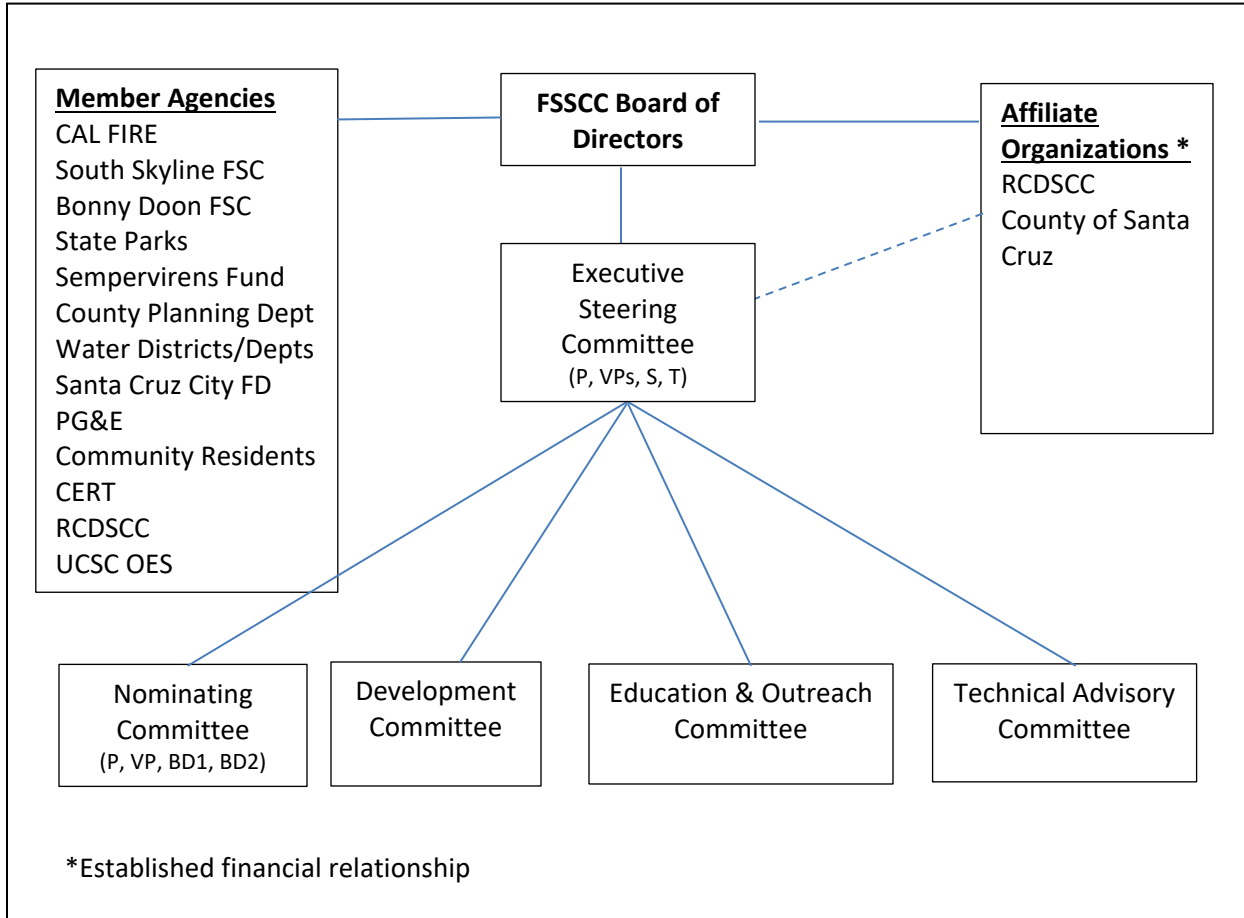


Business Plan for Fire Safe Santa Cruz County 2019 to 2020

A. ORGANIZATION CHART



B. YEARLY BUDGET

- a. FSSCC Requirements – Internal Funding
 - i. Fire Wise Community Program
 - ii. Donations
- b. RCD Administrative Support – County Funding
 - i. Liabilities
 - ii. FSC Accountant
 - iii. Grants
- c. In-kind Services

C. MISSION STATEMENT

To educate and mobilize the people of Santa Cruz County to protect their community, homes, and environment from wildfire.

D. ACTION PLANS FOR THE YEAR

- a. Maintain and continue to strengthen relationship with the RCD in order to provide for the administration and grant writing capacity that FSSCC requires.
- b. Develop a database of potential partners and reach out to identify their strengths, capabilities and willingness to collaborate.
- c. Develop a database of potential donors/supporters
- d. Secure funding to support FSSCC administrative and programmatic needs.
- e. Develop a database of new, potential and currently available grants to help FSSCC act as a clearinghouse for cooperation with community partners to leverage strengths and secure grant funding for projects in the county.
- f. Execute the proposed Fire Wise Community Program.
- g. Work closely with the RCD during the year to execute a series of educational events throughout the county.
- h. Develop an internal system with a "GO TO" person to respond efficiently to homeowner/landowner requests for assistance and follow through to help them achieve their needs.
- i. In order to enhance brand recognition and ease of name use consider changing the current name of Fire Safe Santa Cruz County (FSSCC) to Fire Safe Council of Santa Cruz County (FSCSCC).
- j. Publish an Annual Report for FSSCC highlighting accomplishment during the past year.
- k. Continue the work of established committees to further the long-term strategic goals and yearly action plans of the organization.
- l. Develop an organizational policies and procedures manual.
- m. Execute and complete home hardening grant.